



Suitable for all situations

IDSystems specialise in the supply and installation of systems that demonstrate the sheer versatility of glass. Whatever the requirement IDSystems can provide a completely bespoke, engineered design solution for any domestic or commercial project.

Recognised as the UK's market leader, IDSystems can provide a number of exciting architecturally glazed possibilities, with over 25 different product options, each with their own unique features and benefits.

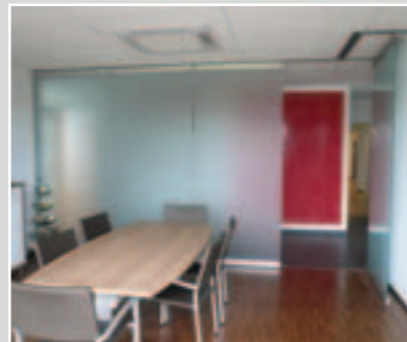
IDSystems will provide you with the 'wow factor' for any building project, making the most of the room available. We'll show you how to add another dimension and create space in the most innovative way. Breaking down the boundaries and constraints set by traditional building methods between exterior and internal space. Maximising the enjoyment of your surroundings, giving you room to breathe and effectively bringing the outside inside.

System types:

- Folding Doors
- Sliding Doors
- Slide and Turn Systems
- Horizontal Sliding Walls
- Glass Roof Systems
- Windows, doors and complimentary glazing

This brochure has been compiled to give you a brief insight and vision into the different system types available. For a more detailed comprehensive analysis, please visit our web site www.i-d-systems.co.uk, request an individual product brochure, or contact our technical sales department. Experience the quality and benefits provided by the products themselves, by arranging an appointment to view our showroom or visit us at one of the exhibitions we attend throughout the year, or visit our permanent exhibition stand at the 'National Self Build and Renovation Centre' in Swindon. Alternatively, having had a quotation, arrange a viewing of a previous installation with a customer recommendation nearer to home.

IDSystems recognise your trust is our responsibility; our attention to detail enables us to provide you with the reassurance that our high quality door systems will deliver continued performance in all situations...



Folding door systems

Manufactured in Germany and established for over 20 years, SUNFLEX are internationally respected for their cutting edge technology, engineering quality and excellence. Renowned as one of the original pioneers of the folding door, they have through continued development completely eliminated the need for sliding posts between panels providing the slimmest sightlines and smallest stacking areas. They are proud to remain at the forefront of new concepts, setting the standard for others to follow.

Versatility

Folding doors can open far wider than conventional French doors and offer up to 95% clear opening, as opposed to the typical Patio doors 40%. Capable of opening widths of up to 25 metres, with 12 panels in each direction, a choice of inward or outward opening, flush or weathered track options. Stacking neatly at 90° all one way or split with a number of panels to the left or the right. IDSystems can provide the most versatile range of opening configurations, with fixed or moveable 90° or 135° angled corner posts, it is possible to completely open up corners, bays and even segmented radius curves.

Flush or weathered track (Performance tested)

Choose either the standard weathered track, providing a severe weather rating (laboratory tested in Germany EN12206-11 - Air permeability Class 4, Water tightness Class 9A (900Pa), Wind resistance Class A4, weather performance to BS6375). Or for added convenience and improved safety, an aluminium flush track recessed into the floor, providing a level walkthrough with an uninterrupted floor finish, compliant to Doc. M of the Building Regulations for disabled access.

High security locking

The standard locking system offers a very high level of security, with a quick smooth and easy operation. It consists of a two-point top and bottom shoot bolt mechanism concealed within the door profile, with an additional central locking point to end lead door. A five-lever euro profile cylinder is integrated into the lead single access or the first opening pair of doors. Intermediate panels are activated by a specially designed flush sprung handle, for added security, there is also the option of additional key locking. All systems are internally glazed with locking external hinge pins and continuous interlocking slim-line finger safe gaskets.

Effortless operating system

Depending upon system type, each wheel and guide mechanism is capable of carrying up to 200 kilograms with top or bottom running options. Recommended panel widths up to 1100mm wide and a maximum height of 2800mm, without the need of a supporting mid-rail. Although at extreme heights we do restrict the panel width maximums. Greater heights can be achieved, please contact our Technical Department for advice.

Energy efficient – low u-values

Capable of accommodating double or triple glazing units up to a thickness of 44mm, the standard glazing consists of a 28mm unit, 4x20x4 double glazed toughened safety glass, to meet and exceed the latest Doc L Building Regulations requirements, quality in accordance to the Glass and Glazing Federation. Centre pane u-values from 1.7W/m2K with Pilkings 'K' hard coat, 1.5W/m2K with an argon gas cavity or 1.2W/m2K with soft coat low 'e', depending upon glass specification. Solar control, security and many other types of high performance glass can also be offered as an optional extra.

Integral Venetian Blinds

Blinds are integrated within the sealed double glazed units therefore requiring no cleaning and are protected from damage. Ensuring privacy when closed they can also be tilted to provide protection from the heat and the glare of the sun. Blind units can be manually operated with a magnetic control or electronically operated via solar control or mains with a switch or remote control.



Flush handle



Finger safe gaskets



Lever handle



SF65 Flush track



SF70 Weather track



SF70 Flush track



Panel catch



Venetian blinds



Aluminium folding door systems

Aluminium with its incredible strength and lightweight construction makes it a highly versatile material. With the market moving away from the traditional uPVC, aluminium provides almost incomparable stability, integrity, and life expectancy. Requiring virtually no maintenance whilst achieving contemporary, minimal and stylish sightlines, making it undoubtedly the material of the future.

When recycled, aluminium loses none of the physical properties which is why it is generally regarded as one of the world's most sustainable building materials. Utilising the very latest in thermal break technology by inserting large polyamide insulating strips between the inner and outer skins, ensures excellent thermal performance and enables Sunflex to manufacture the most advanced energy efficient systems available.

IDSystems offer a full range of aluminium folding door systems types, all designed purposely to meet your exacting requirements.

Key features (depending upon system type):

- Non-thermal or thermally broken for internal or external use, domestic or commercial.
- Thermally broken frame and tracks – polyamide thermal break ensures optimum resistance to combat heat loss and condensation
- Super insulated low u-value energy efficient option – compliant to Building Regulations
- Severe weather rated and security performance tested
- Rounded or square edge profile options to compliment existing doors and windows
- Minimal framework / slim sightlines - without the need for an add-on profile to incorporate a key lock facility, ensures sightlines remain symmetrically the same
- Slender continuous finger safe gaskets
- Trickle ventilation can be incorporated within an add-on profile to the head track
- Tilt and turn windows available integrated within a panel
- Unique lockable partial opening position, for added ventilation
- Marine protection option
- Stainless steel handles and hinges available
- Complete versatility -opening configurations, flush or weathered track options
- Full range of complimentary glazing, doors, windows and roofs to suit

Finishes

Available as standard with a choice of 5 different finishes, Silver anodised or polyester powder coated in a semi gloss finish White RAL 9016, Aluminium RAL 9006, Grey Aluminium RAL 9007 and Anthracite Grey RAL 7016. There are over 201 other RAL colours to choose from or even different colours to the inside and outside (dual colour), also different wood grain effects are available as an additional extra. These can even be applied to the handles and hinges if required. In addition you can specify whether a matt, semi gloss or gloss level of paint finish is required.



Composite – non-insulated or thermally broken aluminium with timber clad

With the many advantages provided by the aluminium folding doors, Sunflex have extended the range to offer two systems, which are internally clad with real wood.

Why compromise - provide the ideal solution with either non-insulated aluminium (internal use) or thermally broken aluminium (external use) to the outside, providing the strength and structural stability but with solid vented timber clad to the inside to match the look and ambience of your room. This perfect marriage gives you the natural charm and beauty of timber and the low maintenance of the aluminium, so you can enjoy the best of both worlds.

Timber folding doors

The Sunflex timber systems are strengthened and stabilised by a process of lamination. The timber has been separated into three solid timber sections, these are bonded back together with opposing grains, achieving greater durability and is less susceptible to movement i.e. twisting or warping. The resulting strength of this process combined with the fibrous make up of timber ensures minimal framework and a lifetime of continued usage and reliability, in addition to the timber's superior thermal qualities.

All timber is sourced from sustainable forests; the standard timbers are Meranti (hardwood) and Nordic pine (knot free-softwood), while other timbers such as solid Oak or Fir are available by special request.

The natural beauty of wood is enhanced by Sunflex's finishing techniques, resulting in the product being comparable to that of high quality furniture, no other system looks like it or can perform like it. Sunflex's superior design ensures that when the timber panels are closed they interlock (knuckle and groove), forming a solid joint that ensures maximum weatherproofing in addition to being an excellent security feature. At harmony with nature, classic design and sympathetic to preservation areas, the timber folding door is suitable for all internal and external applications, for domestic and commercial use.

Key features

- Minimal framework / slimmest sightlines in Europe
- Energy efficient – compliant to Building Regulations
- Internal or external, domestic or commercial
- Slender continuous finger safe gaskets
- Solid timber sections triple laminated to increase strength and minimise risk associated with non-engineered timber twisting or warping
- Full range of finishes, timbers, furniture and customising options
- Severe weather rated with interlocking panels when doors are closed
- Top or bottom running carriages
- Middle folding option for internal use
- Trickle ventilation can be incorporated with the head track
- Tilt and turn windows available integrated within a panel
- Complete versatility -opening configurations, flush or weathered track options
- Full range of complimentary glazing, doors, windows and roofs to suit

Finishes

The natural character of wood is perfectly preserved by using Sikkens micro-porous water based wood stains in a variety of stain colours. (They contain no harmful solvents). Alternatively, the timber can be paint finished to any of the 201 RAL colours available, different colours or wood stains to the inside and outside (dual colour). As standard, Sunflex timber door systems are fully finished, which consists of one basecoat and two topcoats; other finishes are available upon request. Each section is individually dip treated, ensuring equal coverage over all surfaces, protecting the timber against rotting and water penetration. The pigmentation in the treatment protects the timber against ultra violet rays and discoloration.



Sliding door systems

Grand slider IDS99/155 thermally broken aluminium

The Grand slider is a door system with a difference - this truly is the sliding door for giants. With its advanced engineering and tensile strength, enabling extra large glass panels to slide effortlessly, maximising glass area to provide uninterrupted clear views with minimal framework. The term 'patio sliding door' can only be used in the loosest definition as it takes the term to another level.

Available as a twin or triple track, the system is extremely versatile, with up to 8 panels, it is possible to specify which panels are to be fixed, of which other panels can slide behind, or to have all panels sliding. It is also possible to achieve a 100% clear opening, with all the panels sliding on an extended track running behind a wall or into a pocket/cavity, completely out of sight. Additional fixed panels can be 'planted-on' to both ends if required, so widths of up to 20 metres can be accommodated. It is even possible to have the ability to open up corners completely, with a moveable or floating corner post.

Timber sliding door

Ideal for where internal or external space is at a premium, tracks are stepped, so when each sliding panel is closed it covers its own track, protecting it from damage. In addition the panels interlock with the adjacent panel ensuring that only the slim width of an individual panel profile is visible. Alongside the exceptionally smooth gliding action is the enviable ability of a level threshold with the flush track option, this is one of the only systems available with this feature.

Parallel sliding system

The parallel sliding system has a very unique design in that it operates with the use of a single (monorail) track. The moveable panel tilts inwards for ventilation and then projects itself parallel out of the track and slides behind the fixed panel. This means there is no exposed track when the doors are closed. The parallel sliding system is available in 2, 3, or 4 panels, in either timber or thermally broken aluminium and is for all external applications.

Pocket sliding system

The pocket sliding door system is a new generation of sliding door, designed specially to either slide on a hidden track into a purpose built cavity gap between walls or to slide on an extended track running behind a wall or fixed screen. This enables up to 100% clear opening. Where a continuous level floor finish is desired, a flush track can be used, especially as a room divider or between house and conservatory. Available, based on the concepts of non-insulated or thermally broken aluminium or with the addition of real wood clad to the inside (composite) or timber systems.



Slide and turn system

The Sunflex glass sliding and stacking wall system can be frameless, offering clear unobstructed panoramic views, or with minimal vertical profile at the panel joints for improved weather performance. Creating useable space, it provides protection from the elements, noise reduction and energy savings, as well as exceptional operating performance, with minimum impact on existing architecture.

Its timeless design makes it suitable for outside enclosures and therefore a perfect solution for all year round use of balconies, terraces, patios or winter gardens, picnic areas and stadium suites. Alternatively it can be used to create a flexible, contemporary and useable open space internally as internal room dividers for both living and working environments.

The evolution of the slide and turn system has resulted in the development of a slim-line aluminium framed system which is able to accommodate a double glazed unit, therefore providing an ideal economic solution for the division between house and conservatory, as the low e double glazed unit complies with Building regulations for safety and thermal efficiency.

The first opening panel acts as a single 'pass' door, each individual panel then slides independently, supported by a fully adjustable top rail, back across to the same side to stack, available with a standard or flush track option. The horizontal running mechanism allows maximum geometry and glass panels can be opened to any angle between 90o to 180o, including segmented radius curves.

Horizontal sliding wall (HSW)

The horizontal sliding wall system offers 100% clear opening to wide areas by sliding the individual panels through any angle along a top guide rail, into a separate parked position or stacking bay depending upon the actual needs. The top mounted track and rail can be concealed within the ceiling and is therefore entirely without the need of a bottom track, with only floor press stud sockets to accommodate the shootbolt locking rods, leaving an uninterrupted floor surface.

The sophisticated design technology of the running mechanism ensures silent, smooth and effortless operation. Panels can be manufactured up to 3000mm tall and incorporate a single access or pass door for entry. Greater heights can be achieved, please contact our Technical Department for advice.

The horizontal sliding wall system will enhance any building with an attractive transparent look and has become an indispensable method of organizing space in commercial environments. Suitable for any type of room divider, office, bank, school, restaurant, bar, café, shop front, car showroom, swimming pool or shopping mall. Available in frameless all glass solution without vertical framework; non-insulated or thermally broken aluminium; or with the addition of real wood clad to the inside (composite) or timber systems, catering for all needs.



Roofs, conservatories, garden rooms and sky lights

IDSystems can provide the full solution to your design project and our glass roof systems will bring light and life to your home. Through years of technology these systems have been pioneered to provide unlimited versatility in design. These can incorporate sections for the construction of valleys and multi-angle hips, enabling the design of traditional styles to be followed, such as the Mediterranean lean-to, Victorian, Edwardian, pyramid or lantern shape to unique one off creative structures.

Fixed - thermally broken or thermally clad aluminium and timber

Our systems are of the highest quality and can even be designed with a structural ring beam to take the weight of the roof over a folding or sliding door system, allowing maximum light into your home. Furthermore, you can choose whether to use manual or electric roof vents, thermostatic controls and rain sensors to control the environment.

Electric sliding thermally broken aluminium

There are very few things in the world that can enhance your home and quality of life, like the thermally broken aluminium electric sliding roof system. Providing a genuine sense of style, luxury and the focal point to any property, dreamed of and desired by all homeowners. Almost two thirds of the roof has the ability to be opened up, truly letting you enjoy the best of the British weather, the ambience of your garden and the starlit night sky.

Windows, doors and complimentary glazing

IDSystems offer a bespoke selection of fixed, angled or shaped windows designed to complement our existing product range, with a variety of opening styles to suit any project, from a single window to go along side one of our door systems to a complete window package.

Side and top hung windows

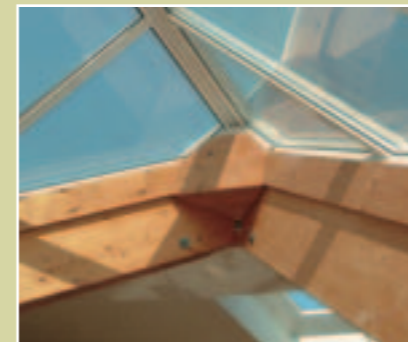
For a more traditional style of window we offer side or top hung windows providing the benefit of not encroaching into any internal space, offering slim sightlines together with the option of a secured night vent position and varying degrees of ventilation with the systems heavy duty stainless steel friction stays.

Tilt and turn windows

Tilt and turn designed inward opening windows are commonly used throughout the world and are becoming increasingly popular in the U.K. They are regularly specified in modern architectural designs where maximising of glass area with minimal framework is being sought. This type of window can transform the appearance of a building, providing a more contemporary look.

Complimentary glazing

Should you require any additional bespoke glazing for your project, incorporating one or maybe more of our systems, we will endeavour to rise to the challenge by providing a special unique solution compared to the more standard alternatives. Drawing on our wealth of glazing experience in order to provide you with a one stop shop for all your glass solutions.



The service process

The quotation

Whether you are an architect, property developer, builder or domestic client, our sales team will provide a prompt response in preparing a quotation. For single sets of doors, we would simply require the aperture sizes and any special requirements; for more complex projects, plans would be most helpful.

The sales team

The sales team is dedicated to providing you with all the relevant information required, including product brochures, project design assistance, sales or showroom meetings and viewable locations. We can also provide dates of national exhibitions we attend - so you can make your decision based on all the facts.

If you would like help in creating your design or would benefit from ideas on what could be achieved, IDSystems will always be happy to offer the benefit of their experience. Whether you wish to know how to open corners, design roofs, or detail threshold, our technical team will be able to offer invaluable advice.

To help further, our in-house CAD department can send standard section or generic drawings to help you visualise the finer details.

The contracts team

Should you entrust IDSystems with your project and wish to proceed with placing an order with us, our contracts team will look after you. The team will prepare requests for deposit payment or payment for a site survey, depending upon whether we will be working to agreed sizes or whether a site visit is required by one of our qualified surveyors. Once the full 30% deposit has been received and we have all the relevant manufacturing data, your contract will be passed to the technical team.

The technical team

The technical team is responsible for submitting full CAD drawings completely free of charge, for your approval. If you have a builder and architect involved, we will work alongside them - supplying all information required - to ensure the project runs like clockwork. On receipt of the approved drawings and signed contract, your order will be placed. The contract team will send confirmation of your order and the expected delivery date along with all other relevant paperwork.

The installation team

You will be contacted at least one week prior to delivery if you have elected for supply only, or informed of the final installation date. Our installation engineers are all employed by IDSystems, allowing us to fully guarantee the quality of their workmanship, with complete confidence. Once the system has been installed to your satisfaction, the site left clean and tidy and upon final payment, our engineers will explain and hand over the operating instructions, care and maintenance procedures, warranty and keys.

After sales care

In the unlikely event that you encounter any problems with your installation, however big or small, we will always respond promptly and efficiently.



Designed to perfection

Glass Innovations

Make room to breathe, sit back, relax and bring the outside inside with IDSystems... Our extensive range of products are engineered by SUNFLEX in Germany to the very highest quality and are designed to integrate fully with each other, providing a complete solution to suit your exact individual requirement. This enables you to achieve an aesthetically uniform appearance throughout, including single access doors, French doors, windows and fixed or angled glazing.

Expert advice

Through continued growth, we have established IDSystems as the market leader in the supply and installation of folding doors and sliding doors systems. However, it is not something that has just happened overnight. The motivation and desire to 'make it happen' are the very ethics we breathe. With evolving technologies, research and constant development we are confident that our product range will always remain at the forefront of the competition. We strive to improve and innovate and believe customer satisfaction and recommendation will remain the key to our continued success.

Quality assurance

Our systems have been supplied to many countries throughout the world for more than 20 years and recognised as setting the benchmark in both design and technology, IDSystems stands for quality and reliability. The standards on the continent of product testing far exceed those required by the British Regulations in weather rating, insulation, safety and security.

The name you can trust

Choosing the right company to work with is imperative and 'when only the best will do' it has to be IDSystems. From your very first contact with us, you will know 'that you have come to the right place'. With friendly, knowledgeable staff, it is our commitment to provide a full, professional service. From project design, to liaising directly with architects and builders and providing working CAD drawings, through to final installation, we will be with you every step of the way. We guarantee you the highest standard of design, build, quality and service, for complete peace of mind.

Guaranteed peace of mind

With extensive experience and technical skills from within the industry, IDSystems offers you high quality products at a competitive price along with exceptional customer care. We service the whole of the UK including the channel islands, working on small domestic projects, such as replacing patio doors, through to multi-million pound commercial projects. The company is a member of both FENSA and the UK Trades Confederation.

